



**VIT-AP**  
**UNIVERSITY**

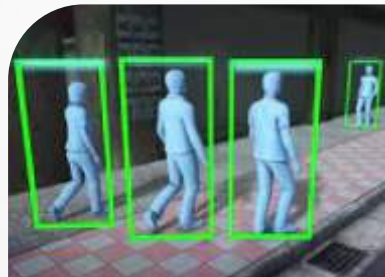
Apply Knowledge. Improve Life!®

# Biomedical Signal and Image Processing using Machine Learning

(A Value Added Course)

offered by  
**School of Electronics Engineering (SENSE)**

Biomedical signal and image processing aims at extracting significant information from biomedical signals (ECG, EEG, EMG, etc) or images (CT-scan, X-ray, MRI, etc). With the aid of biomedical signal processing, biologists can discover new biology and physicians can monitor distinct illnesses. Machine learning (ML) is the study of computer algorithms that can improve automatically through experience and using data. Machine learning algorithms build a model based on sample data, known as training data, to make predictions or decisions without being explicitly programmed to do so. ML methods can be employed to assist clinicians in making correct and timed decisions in disease diagnosis.



### Course Highlights :-

- \* Fundamentals of Digital Signal (ECG, EEG, EMG, etc.) and Image Processing.
- \* Fundamentals of Machine Learning
- \* Applications of ML in Image Processing
- \* Applications of ML in Biomedical Signals
- \* Projects/ Demo on real-time problems

**EVERY MONDAY 11.00 AM to 01.00 PM**  
**Commence from 07-03-2022.**

**Certificate after completion of course**